



HABILEAD

TRUCK & BUS RADIAL TIRE

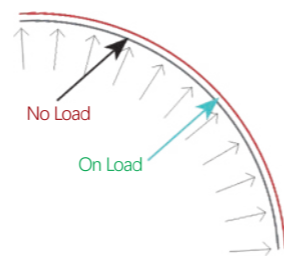




TYRE INTRODUCTION

● Dynamic stress balance technique for carcass and contour

Enhance casing endurance by adoption of dynamic stress balance technique for carcass and contour.



● Enhanced bead endurance

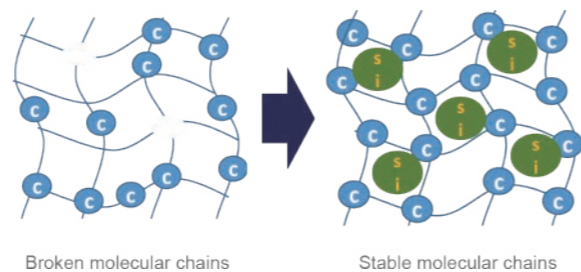
- ① Lower stress's lay-out in bead.
- ② High tensile bead materials, greatly improving overload performance.



● Adoption of low temperature mixing and curing technology

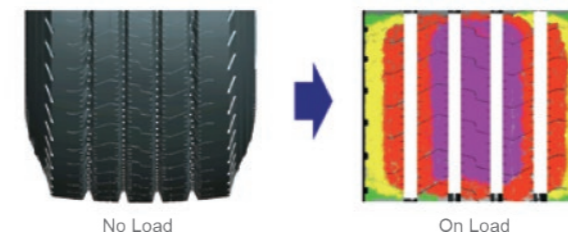
① Increase the dispersion degree of carbon black
 ② Avoid large molecular chains to be excessively melted at high temperature

① Maximum tread wear resistance for longer mileage
 ② Reduce heat buildup for longer life

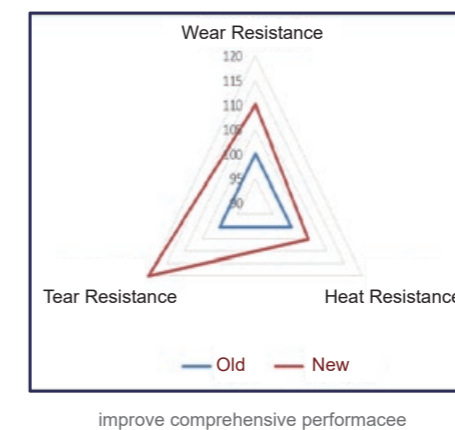


● Improve the foot shape and uniform tread pressure by computer optimization

Optimization of the foot shape and contact pressure helps to prevent irregular wear and increase wear resistance performance.

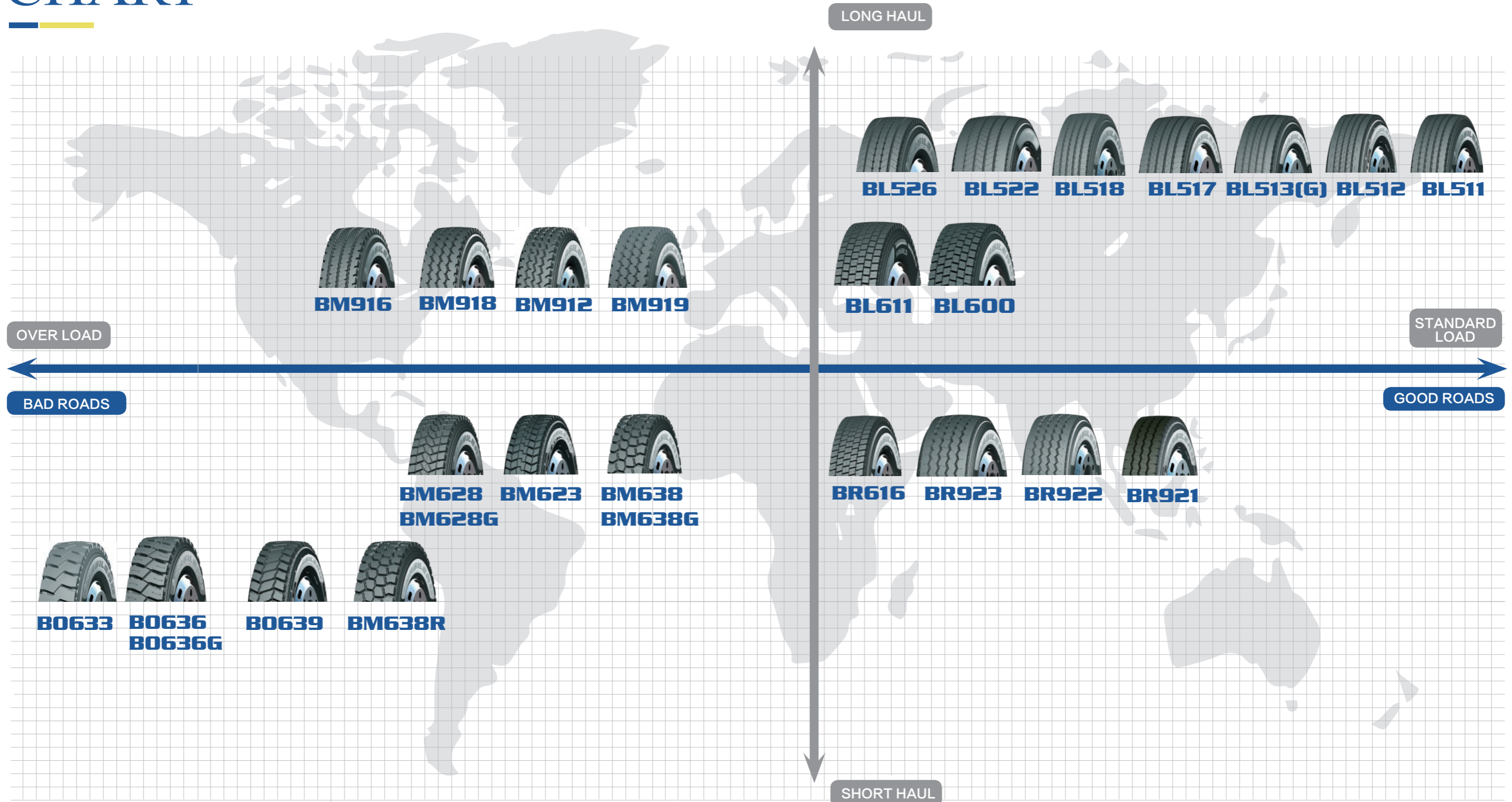


● Unique tread compound design provide longer mileage and resist heat buildup.



- The key raw materials are provided by the world-class suppliers, especially Super High Tensile steel are used for the carcass.
- According to the actual situation of Chinese load and road conditions, the truck tires are adopted with a new bead strengthening technology, which can effectively improve the tyre load performance, and also can effectively prevent the bead separation, burst, crack and so on.
- The application of uniformity round technology in tires greatly enhances the tire comfort performance, reduces the tire vibration during driving, relieves driving fatigue, and makes drivers safer and more comfortable.

TYRE ORIENTATION CHART



BL526

ULTRA-HIGH WEAR RESISTANCE, LONG HAUL, STANDARD LOADING, COMFORT

● Apply ● Available ● Disable



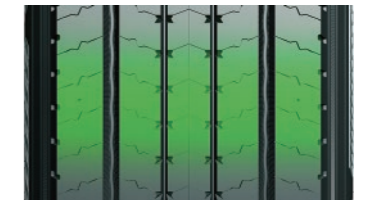
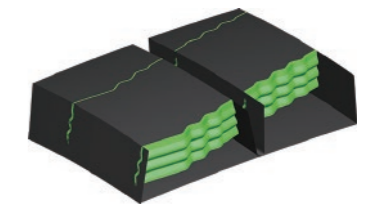
- Widened tread, low heat generation and super wear resistance recipes, ensuring long mileage over 400,000 kms.

- Tread 3D interlocking pattern, providing not only better heat dissipation capacity and grip performance at the same time, but also reducing abnormal wear; together with new wear resistance recipe, providing 20% longer mileage than before.

- Reducing tire jitter or offset and improving driving comfort by the adoption of 4 belt technique.



**BL612
PIONEER PARTNER**



LONGHAUL PIONEER SERIES

Size	PR	Standard Rim (Inch)	Outside Diameter (mm)	Section Width (mm)	Max. Load				Max. Air Pressure				Load Index	Speed Rating
					Single		Double		Single		Double			
					KG	LBS	KG	LBS	KPa	PSI	KPa	PSI		
12R22.5	18	9.00	1085	300	3550	7830	3250	7160	930	135	930	135	152/149	L

BL513G

STANDARD LOAD, ULTRA WEAR RESISTANCE, STRONG DRIVING FORCE

● Apply ● Available ● Disable



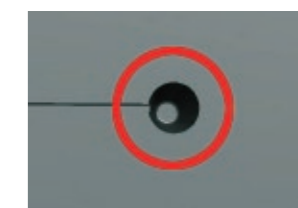
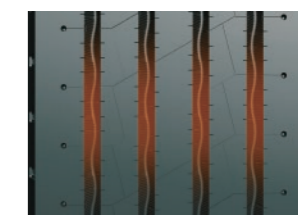
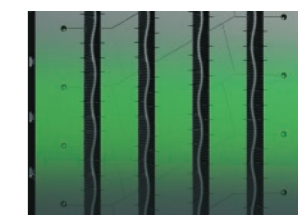
Using super-strong skeleton material, super-strong rim structure, nylon reinforcement layer and shoulder shape optimization integration technology improve the heavy-duty capacity greatly.

Low heat generation and super wear-resistant compound to ensure ultra-high mileage tire life;

Ultra-thin kerf hybrid pitch arrangement and small incision are adopted to achieve silent and prevent eccentric wear;

The application of 4-layer Structure belt technology and the refined operation management of cushioning system can further improve the wear-resistant and provide a more comfortable ride;

Stone Ejectors & Arc Groove design of the groove's bottom for less groove damage and crack - small stones are forced out of groove.



MEDIUM AND LONG HAUL SERIES

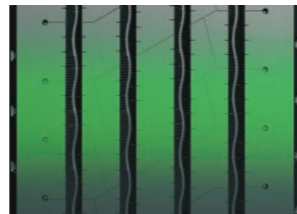
Size	PR	Standard Rim (Inch)	Outside Diameter (mm)	Section Width (mm)	Max. Load				Max. Air Pressure				Load Index	Speed Rating
					Single		Double		Single		Double			
					KG	LBS	KG	LBS	KPa	PSI	KPa	PSI		
295/80R22.5	18	9.00	1044	298	3550	7830	3250	7160	900	130	900	130	152/149	M

BL513

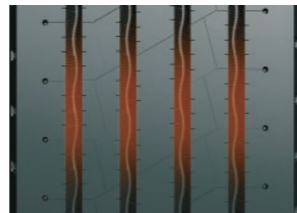
STANDARD LOAD, ULTRA WEAR RESISTANCE, STRONG DRIVING FORCE



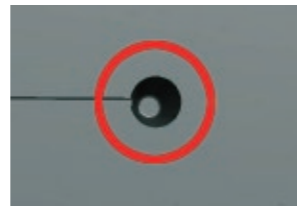
- Low heat generation and super wear-resistant compound to ensure ultra-high mileage tire life;



- Ultra-thin kerf hybrid pitch arrangement and small incision are adopted to achieve silent and prevent eccentric wear;



- The application of 4-layer Structure belt technology and the refined operation management of cushioning system can further improve the wear-resistant and provide a more comfortable ride;



- Stone Ejectors & Arc Groove design of the groove's bottom for less groove damage and crack - small stones are forced out of groove.

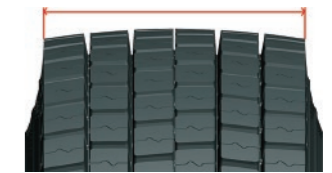
Size	PR	Standard Rim (Inch)	Outside Diameter (mm)	Section Width (mm)	Max. Load				Max. Air Pressure				Load Index	Speed Rating
					Single		Double		Single		Double			
					KG	LBS	KG	LBS	KPa	PSI	KPa	PSI		
295/80R22.5	18	9.00	1044	298	3550	7830	3250	7160	900	130	900	130	152/149	M
315/80R22.5	20	9.00	1076	312	4125	9090	3625	8050	860	125	860	125	157/153	L

BL611

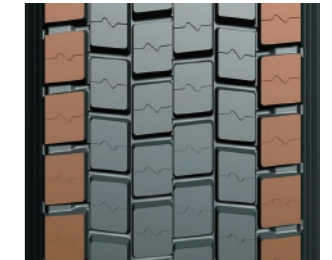
STANDARD LOAD, LONG HAUL, ULTRA WEAR RESISTANCE, COMFORT



- Wide tread and micro-particle carbon black material for higher mileage and superior traction performance.



- Strengthen the rigidity of shoulder, improve high speed driving stability and prevent shoulder separation or burst.



- New reinforced carcass material ensure the stability before and after tire inflation, reduce the driving deformation, improve uneven wear resistance and long mileage.

Size	PR	Standard Rim (Inch)	Outside Diameter (mm)	Section Width (mm)	Max. Load				Max. Air Pressure				Load Index	Speed Rating
					Single		Double		Single		Double			
					KG	LBS	KG	LBS	KPa	PSI	KPa	PSI		
11R22.5	16	8.25	1065	279	3000	6610	2725	6005	830	120	830	120	146/143	L
12R22.5	18	9.00	1085	300	3550	7830	3250	7160	930	135	930	135	152/149	L

BL517

STANDARD LOAD, ULTRA WEAR RESISTANCE, STRONG DRIVING FORCE

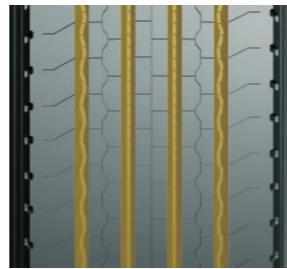


- Wide tread and advanced tread compound for higher mileage and superior traction performance.

- Ultra-thin kerfs arrangement for low noise, safe and improving wet grip performance.

- Abnormal wear and noise minimized by optimized ultra-thin kerfs arrangement.

- Directional lug-groove for stone ejection.



Size	PR	Standard Rim (Inch)	Outside Diameter (mm)	Section Width (mm)	Max. Load				Max. Air Pressure				Load Index	Speed Rating
					Single		Double		Single		Double			
					KG	LBS	KG	LBS	KPa	PSI	KPa	PSI		
205/75R17.5	16	6.00	753	205	1650	3640	1550	3415	830	120	830	120	125/123	L
215/75R17.5	16	6.00	767	211	1750	3860	1600	3525	830	120	830	120	127/124	L
235/75R17.5	16	6.75	797	233	2000	4410	1850	4080	830	120	830	120	132/129	L
225/70R19.5	16	6.75	811	226	1900	4190	1800	3970	830	120	830	120	130/128	L
245/70R19.5	16	7.50	839	248	2180	4805	2060	4540	830	120	830	120	135/133	L
265/70R19.5	16	7.50	867	262	2430	5355	2240	4940	830	120	830	120	139/136	L
255/70R22.5	16	7.50	930	255	2500	5510	2300	5070	830	120	830	120	140/137	L
295/80R22.5	18	9.00	1044	298	3550	7830	3250	7160	900	130	900	130	152/149	M

BL518

STANDARD LOAD, ULTRA WEAR RESISTANCE, FUEL SAVING, COMFORT

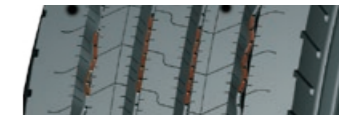
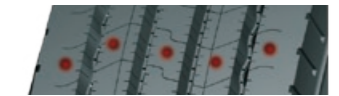


- Longer mileage by adoption of new cap tread compound, specially designed for long haul condition.

- Abnormal wear and noise minimized by optimized ultra-thin kerfs arrangement.

- Extra-robust 4 steel belts construction for higher mileage and comfortable driving experience.

- Optimized groove angle with anti-zigzag design for stone rejection ability and groove crack prevention.



Size	PR	Standard Rim (Inch)	Outside Diameter (mm)	Section Width (mm)	Max. Load				Max. Air Pressure				Load Index	Speed Rating
					Single		Double		Single		Double			
					KG	LBS	KG	LBS	KPa	PSI	KPa	PSI		
6.50R16LT	12	5.50F	750	185	1060	2335	925	2040	670	97	670	97	110/105	L
7.00R16LT	14	5.50F	775	200	1320	2910	1180	2600	770	112	770	112	118/114	K
11R22.5	16	8.25	1054	279	3000	6610	2725	6005	830	120	830	120	146/143	L
275/70R22.5	16	8.25	958	276	2800	6175	2575	5675	830	120	830	120	144/141	M
275/80R22.5	18	8.25	1012	276	3250	7160	3000	6610	900	130	900	130	149/146	K
295/60R22.5	18	9.00	923	292	3350	7370	3075	6765	900	130	900	130	150/147	L

BL522

STANDARD LOAD, ULTRA WEAR RESISTANCE, STRONG DRIVING FORCE

● Apply ● Available ● Disable




- Wide tread and advanced tread compound for higher mileage and superior traction performance.
- Ultra-thin kerfs arrangement for low noise, safe and improving wet grip performance.
- Abnormal wear and noise minimized by optimized ultra-thin kerfs arrangement.
- Directional lug-groove for stone ejection.



Size	PR	Standard Rim Diameter (Inch)	Outside Diameter (mm)	Section Width (mm)	Max. Load				Max. Air Pressure				Load Index	Speed Rating
					Single		Double		Single		Double			
					KG	LBS	KG	LBS	KPa	PSI	KPa	PSI		
385/55R22.5	20	12.25	996	386	4500	9920	-	-	900	130	-	-	160	K
385/65R22.5	20	11.75	1072	389	4500	9920	-	-	900	130	-	-	160	K

BL511

STANDARD LOAD, ULTRA WEAR RESISTANCE, STRONG DRIVING FORCE

● Apply ● Available ● Disable




- Low heat generation and super wear-resistant compound to ensure ultra-high mileage tire life;
- The application of particle reinforcement materials and high resilience technology can reduce the heat generation of extrusion friction between polymer chains, and provide low rolling-resistant and fuel-efficient by lowering heat generation and decreasing energy loss.
- Technology of uniform grounding and anti-deformation are adopted to prevent eccentric wear and decrease ineffective wear.



Size	PR	Standard Rim Diameter (Inch)	Outside Diameter (mm)	Section Width (mm)	Max. Load				Max. Air Pressure				Load Index	Speed Rating
					Single		Double		Single		Double			
					KG	LBS	KG	LBS	KPa	PSI	KPa	PSI		
12R22.5	18	9.00	1085	300	3550	7830	3250	7160	930	135	930	135	152/149	L

BL600

STANDARD LOAD, LONG HAUL, ULTRA WEAR RESISTANCE, COMFORT

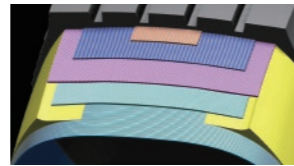
● Apply ● Available ● Disable



Wide tread and wear-resistant formula ensures ultra-high mileage and provides strong driving force for the vehicle.



The ultra-thin cutter slot is arranged with mixed variable pitch, which can make the tread wear more uniform while realizing mute, prevent slope climbing and sliding in rainy days, and improve driving safety;



The application of 4-layer belt layer technology and anti bounce fine operation management can further improve the wear resistance and ensure passengers to enjoy a comfortable journey;



The directional groove shape design can effectively prevent stone inclusion.

Size	PR	Standard Rim (Inch)	Outside Diameter (mm)	Section Width (mm)	Max. Load				Max. Air Pressure				Load Index	Speed Rating
					Single		Double		Single		Double			
					KG	LBS	KG	LBS	KPa	PSI	KPa	PSI		
295/80R22.5	18	9.00	1044	298	3550	7830	3250	7160	130	900	900	130	152/149	M
315/80R22.5	20	9.00	1076	312	4125	9090	3652	8050	125	860	900	125	157/153	M

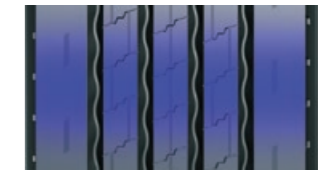
BL512

STANDARD LOAD, LONG HAUL, ULTRA WEAR RESISTANCE, COMFORT

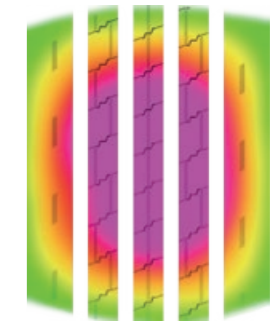
● Apply ● Available ● Disable



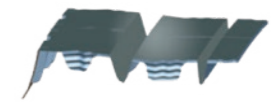
Colling case formula, low hear generation.



New Profile design helps the tread to equally share the ground pressure, prevent irregular wear and increase wear resistance performance.



Top dynamic balance performance; Tire circularity performance well.



Lower wear resistance by eco-constructing design.

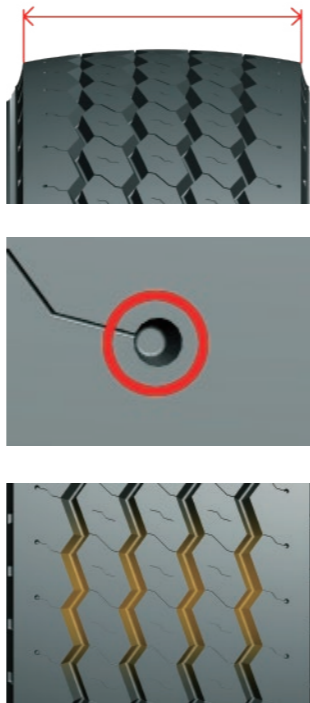
Size	PR	Standard Rim (Inch)	Outside Diameter (mm)	Section Width (mm)	Max. Load				Max. Air Pressure				Load Index	Speed Rating
					Single		Double		Single		Double			
					KG	LBS	KG	LBS	KPa	PSI	KPa	PSI		
295/80R22.5	18	9.00	1044	298	3550	7830	3250	7160	900	130	900	130	152/149	M

BR922

STANDARD LOAD, LONG HAUL, ULTRA WEAR RESISTANCE, COMFORT



- Colling case formula, low hear generation.
- New Profile design helps the tread to equally share the ground pressure, prevent irregular wear and increase wear resistance performance.
- Top dynamic balance performance; Tire circularity performance well.
- Lower wear resistance by eco-constructing design.



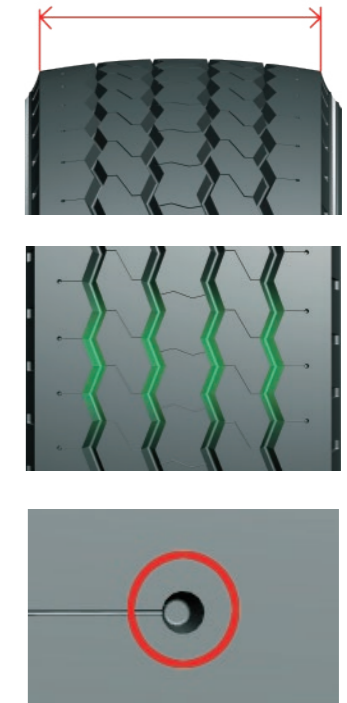
Size	PR	Standard Rim (Inch)	Outside Diameter (mm)	Section Width (mm)	Max. Load				Max. Air Pressure				Load Index	Speed Rating
					Single		Double		Single		Double			
					KG	LBS	KG	LBS	KPa	PSI	KPa	PSI		
385/65R22.5	20	11.75	1072	389	4500	9920	-	-	900	130	-	-	160	K
425/65R22.5	20	12.25	1124	422	5000	11000	-	-	830	120	-	-	164	K

BR923

STANDARD LOAD, ULTRA WEAR RESISTANCE, STRONG DRIVING FORCE



- Wide tread and advanced tread compound for higher mileage and superior traction performance.
- Ultra-thin kerfs arrangement for low noise, safe and improving wet grip performance.
- Abnormal wear and noise minimized by optimized ultra-thin kerfs arrangement.
- Directional lug-groove for stone ejection.

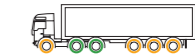


Size	PR	Standard Rim (Inch)	Outside Diameter (mm)	Section Width (mm)	Max. Load				Max. Air Pressure				Load Index	Speed Rating
					Single		Double		Single		Double			
					KG	LBS	KG	LBS	KPa	PSI	KPa	PSI		
385/55R22.5	20	12.25	996	386	4500	9920	-	-	900	130	-	-	160	K
425/65R22.5	20	12.25	1124	422	5000	11000	-	-	830	120	-	-	164	K

BR616

HEAVY LOAD, STRONG DRIVING FORCE

● Apply ● Available ● Disable



Dynamic, low-strain carcass optimized design, super high-strength skeleton material used, provide surprisingly low-failure performance under the harsh operating conditions in driving wheel;

Directional pattern design, combined with the rigidity deviation of the front and rear landing angles, makes the entire life cycle wear smoothly. Combined with the ultra-high wear-resistant formula, this pattern has super wear-resistant performance.

Better running surface, appropriate tread depth, increased heat dissipation hole, and low rolling resistance carcass provide excellent fuel economy.

With low-noise pattern pitch design and asymmetric pattern design, lower the noise, provide more comfortable driving.

Size	PR	Standard Rim (Inch)	Outside Diameter (mm)	Section Width (mm)	Max. Load				Max. Air Pressure				Load Index	Speed Rating
					Single		Double		Single		Double			
					KG	LBS	KG	LBS	KPa	PSI	KPa	PSI		
12R22.5	18	9.00	1085	300	3550	7830	3250	7160	930	135	930	135	152/149	L

SHORT AND MEDIUM HAUL SERIES



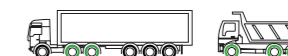
MIXED AND MINING ROAD SERIES

BM638

HEAVY LOAD, STRONG DRIVING FORCE



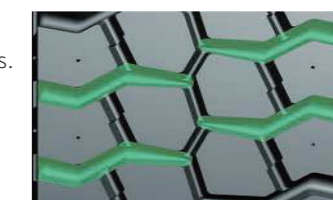
● Apply ● Available ● Disable



● Provide strong driving force, avoid hitblasting significantly.



● Special ultra-low heat build-up, tear-resistant formula inhibits heat build-up under heavy-duty, Excellent anti-cut off on harsh roads.



● Double-layer tread with ultra-low heat build-up material formula, prevent the occurrence of tread-empty under heavy load.

Size	PR	Standard Rim (Inch)	Outside Diameter (mm)	Section Width (mm)	Max. Load		Max. Air Pressure				Load Index	Speed Rating		
					Single	Double	Single	Double						
					KG	LBS	KG	LBS	KPa	PSI			KPa	PSI
12.00R20	18	8.5	1125	315	3750	8270	3450	7610	830	120	830	120	154/151	K

COMPANY PROFILE

TYRE INTRODUCTION

TYRE ORIENTATION CHART

LONGHAUL PIONEER SERIES

MEDIUM AND LONG HAUL SERIES

SHORT AND MEDIUM HAUL SERIES

MIXED AND MINING ROAD SERIES

MINE SITE SERIES

KNOWLEDGE OF TYRE

BM638G

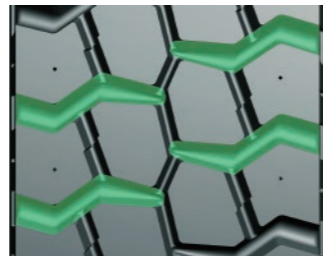
HEAVY LOAD, LONG SERVICE LIFE, DAMAGE RESISTANCE, LOW FAILURE RATE



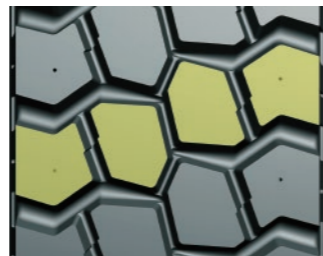
● Apply ● Available ● Disable



The use of high wear and tear resistance formula improve the wear resistance performance on paved road and cut and tear resistance in bad road condition.



The low wavy design and the stone bouncing construction at the groove bottom can prevent stones from damaging or breaking the groove; the lug pattern design brings strong driving force, moderate impact and avoid blowout.



The strong framework material and bead structure improve the heavy load performance.



Size	PR	Standard Rim (Inch)	Outside Diameter (mm)	Section Width (mm)	Max. Load				Max. Air Pressure				Load Index	Speed Rating
					Single		Double		Single		Double			
					KG	LBS	KG	LBS	KPa	PSI	KPa	PSI		
12.00R20	20	8.5	1125	315	4000	8820	3650	8050	900	130	900	130	156/153	J

BM628G

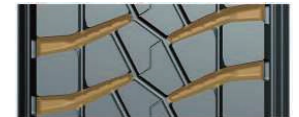
HEAVY LOAD, ULTRA WEAR RESISTANCE, ALL POSITION



● Apply ● Available ● Disable



Using super-strong skeleton material, super-strong rim structure, nylon reinforcement layer and shoulder shape optimization integration technology improve the heavy-duty capacity greatly.



The lateral block pattern design provide strong driving force under heavy-duty conditions, avoid hit-blasting significantly.

Special protrusions under horizontal grooves, Reinforced ribs at longitudinal grooves, prevent damage to the bottom of the grooves by stones.

Ultra-low heat build-up, tear-resistant formula inhibit heat build-up and prevent tread-delamination under heavy-duty , excellent cutresistance under harsh road.

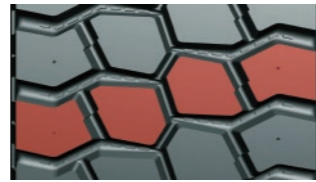
Size	PR	Standard Rim (Inch)	Outside Diameter (mm)	Section Width (mm)	Max. Load				Max. Air Pressure				Load Index	Speed Rating
					Single		Double		Single		Double			
					KG	LBS	KG	LBS	KPa	PSI	KPa	PSI		
12.00R20	20	8.5	1136	315	4000	8820	3650	8050	900	130	900	130	156/153	J
12R22.5	18	9.00	1085	300	3550	7830	3250	7160	930	135	930	135	152/149	K

BM638R

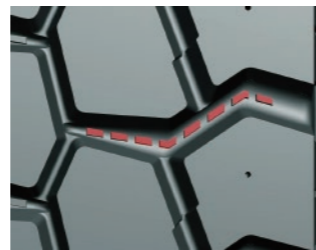
HEAVY LOAD, LONG SERVICE LIFE, DAMAGE RESISTANCE, LOW FAILURE RATE



- The transverse block pattern design can provide strong driving force under heavy load conditions, mitigate impact energy and inhibit impact blasting.



- The use of special ultra-low heat generation and tear resistance formula can inhibit the early void caused by heat accumulation under heavy load conditions, and has excellent anti cutting block performance when used on poor roads.



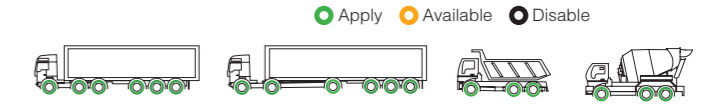
- The tread adopts the formula of double-layer ultra-low heat generating material to prevent the occurrence of void accident under heavy load.

- The use of stone blasting device can prevent the damage of stone inclusion to the ditch bottom and belt layer, and improve the safety and durability.

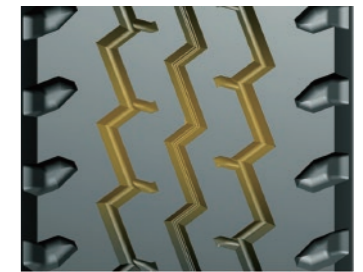
Size	PR	Standard Rim (Inch)	Outside Diameter (mm)	Section Width (mm)	Max. Load				Max. Air Pressure				Load Index	Speed Rating
					Single		Double		Single		Double			
					KG	LBS	KG	LBS	KPa	PSI	KPa	PSI		
9.00R20	16	7.0	1019	259	3550	7830	3250	7160	930	135	930	135	144/142	K
10.00R20	18	7.5	1054	278	3250	7160	3000	6610	930	135	930	135	149/146	K
12.00R20	18	8.5	1125	315	3750	8270	3250	7610	830	120	830	120	154/151	K

BM912

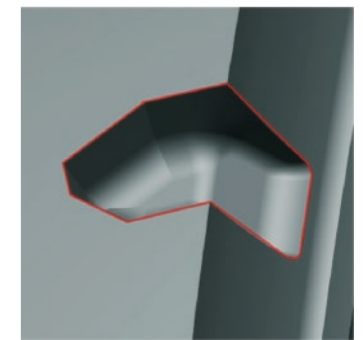
HEAVY LOADING, LONG USING LIFE, DAMAGE RESISTANCE



- The design of three tortuous V-shaped large angle grooves makes it good maneuverability.



- The compound of high wear resistance and tear resistance can be used on pavement roads with high abrasion resistance and excellent cutting resistance when run on poor roads.



- The large stepped shoulder flower design work well both in heat dissipation, but also partial wear resistance.

Size	PR	Standard Rim (Inch)	Outside Diameter (mm)	Section Width (mm)	Max. Load				Max. Air Pressure				Load Index	Speed Rating
					Single		Double		Single		Double			
					KG	LBS	KG	LBS	KPa	PSI	KPa	PSI		
7.50R16LT	14	6.00	805	215	1500	3350	1320	2910	770	112	770	112	122/118	L
8.25R16LT	16	6.50	855	235	1800	3970	1600	3525	770	112	770	112	128/124	L
8.25R20	16	6.50	974	236	2430	5355	2300	5070	930	135	930	135	139/137	K
9.00R20	16	7.00	1019	259	2800	6175	2650	5840	900	130	900	130	144/142	K
12R22.5	18	9.00	1085	300	3550	7830	3250	7160	930	135	930	135	152/149	K

BM623

HEAVY LOAD, LONG SERVICE LIFE, DAMAGE RESISTANCE, LOW FAILURE RATE



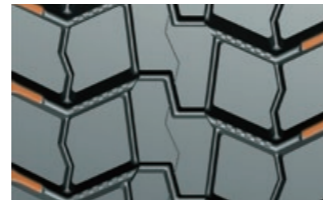
● Apply ● Available ● Disable



● The use of high wear and tear resistance formula improve the wear resistance performance on paved road and cut and tear resistance in bad road condition.



● The low wavy design and the stone bouncing construction at the groove bottom can prevent stones from damaging or breaking the groove; the lug pattern design brings strong driving force, moderate impact and avoid blowout.



● The strong framework material and bead structure improve the heavy load performance.

Size	PR	Standard Rim (Inch)	Outside Diameter (mm)	Section Width (mm)	Max. Load				Max. Air Pressure				Load Index	Speed Rating
					Single		Double		Single		Double			
					KG	LBS	KG	LBS	KPa	PSI	KPa	PSI		
12.00R24	20	8.5	1220	315	4500	9930	4125	9105	900	130	900	130	160/157	K

BM628

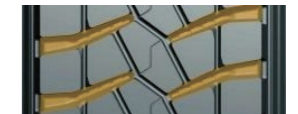
HEAVY LOAD, DAMAGE RESISTANCE, LONG SERVICE LIFE



● Apply ● Available ● Disable



● The formula with high abrasion resistance and tear resistance can be used on paved roads with high abrasion resistance ,excellent cutting resistance and block falling resistance when used on poor roads.



● The blocks are used in the horizontal ditch and the stiffeners are used in the longitudinal ditch to prevent the stones from damaging the bottom of the ditch.



● The transverse block pattern design can provide strong driving force for the vehicle, alleviate the impact energy and inhibit the impact blasting;

● Proper and strong skeleton material selection and ring structure, as well as optimized shoulder image, can have appropriate load-bearing capacity.

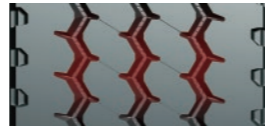
Size	PR	Standard Rim (Inch)	Outside Diameter (mm)	Section Width (mm)	Max. Load				Max. Air Pressure				Load Index	Speed Rating
					Single		Double		Single		Double			
					KG	LBS	KG	LBS	KPa	PSI	KPa	PSI		
11.00R20	18	8.00	1096	293	3550	7830	3250	7160	930	135	930	135	152/146	J
12.00R20	18	8.50	1136	315	3750	8270	3450	7610	830	120	830	120	154/151	K
12R22.5	18	9.00	1085	300	3550	7830	3250	7160	930	135	930	135	152/149	K

BM918

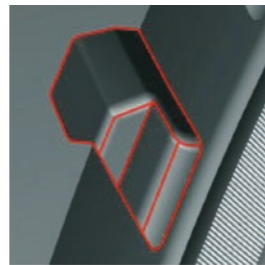
HEAVY LOAD, DAMAGE RESISTANCE, LONG SERVICE LIFE



- The irregular block pattern design can not only provide strong driving force but also rest rain tyre impact burst.



- Stone ejectors in cross ditch and the reforce rib with longitudinal groove can avoid the groove bottom damage by gravels.

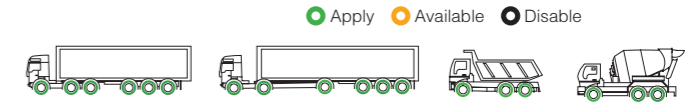


- Excellent cutting resistance, dropping resistance on rough road and excellent wear resistance on pavement road with widden pattern of exclusive formula.

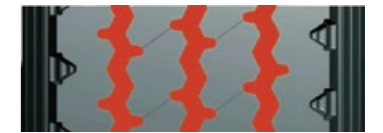
Size	PR	Standard Rim (Inch)	Outside Diameter (mm)	Section Width (mm)	Max. Load				Max. Air Pressure				Load Index	Speed Rating
					Single		Double		Single		Double			
					KG	LBS	KG	LBS	KPa	PSI	KPa	PSI		
12R22.5	18	9.00	1085	300	3550	7830	3250	7160	930	135	930	135	152/149	K

BM919

OVERLOAD, DAMAGE RESISTANCE, LOW FAILURE RATE



- 3 zigzag grooves pattern design and special formula, providing better tear resistance performance on mixed road and wear resistance performance on pavement road.



- The ladder type design on shoulder for low heat and eccentric wear resistance.



- Special formula providing superior tear resistance and cut resistance performance.

- Gseries, enhanced bead with nylon and strong carcass design, 0 degree structure on shoulder, providing superior performance under heavy load conditions.

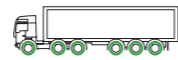
Size	PR	Standard Rim (Inch)	Outside Diameter (mm)	Section Width (mm)	Max. Load				Max. Air Pressure				Load Index	Speed Rating
					Single		Double		Single		Double			
					KG	LBS	KG	LBS	KPa	PSI	KPa	PSI		
12.00R20	18	8.5	1125	315	3750	8270	3450	7610	830	120	830	120	150/147	K
13R22.5	18	9.75	1124	320	3750	8270	3450	7610	830	120	830	120	154/151	K
315/80R22.5	20	9.00	1076	312	4125	9090	3650	8050	860	125	860	125	157/153	L

BM916

HEAVY LOAD, DAMAGE RESISTANCE, LONG SERVICE LIFE



● Apply ● Available ● Disable



● V shape groove and stone ejection design, avoiding the impact on groove bottom and belt.



● The ladder type design on shoulder for low heat and eccentric wear resistance.



● Unique zigzag pattern design and special formula, providing better tear resistance performance on mixed road and wear resistance performance on pavement road.

Size	PR	Standard Rim (Inch)	Outside Diameter (mm)	Section Width (mm)	Max. Load				Max. Air Pressure				Load Index	Speed Rating
					Single		Double		Single		Double			
					KG	LBS	KG	LBS	KPa	PSI	KPa	PSI		
10.00R20	16	7.5	1054	278	3000	6610	2725	6005	830	120	830	120	146/143	K
11.00R20	18	8.0	1085	293	3550	7830	3250	7160	930	135	930	135	152/149	J
12.00R20	18	8.5	1125	315	3750	8270	3450	7610	830	120	830	120	154/151	K
12R22.5	18	9.00	1085	300	3550	7830	3250	7160	930	135	930	135	152/149	K
13R22.5	18	9.75	1124	320	3750	8270	3450	7610	830	120	830	120	154/151	K

BR921

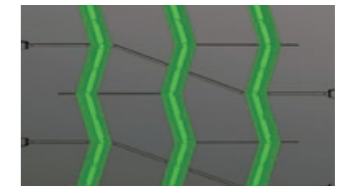
HEAVY LOAD, ALL POSITION, ULTRA WEAR RESISTANCE



● Apply ● Available ● Disable



● The Z groove design makes it can be used on all wheel position, better for fuel saving and longer mileage.



● The optimized tread rubber composition improves wear resistance.



● Reinforced carcass and bead designs provide better performance in heavy load condition.



Size	PR	Standard Rim (Inch)	Outside Diameter (mm)	Section Width (mm)	Max. Load				Max. Air Pressure				Load Index	Speed Rating
					Single		Double		Single		Double			
					KG	LBS	KG	LBS	KPa	PSI	KPa	PSI		
12.00R24	20	8.5	1220	315	4500	9930	4125	9105	900	130	900	130	160/157	K

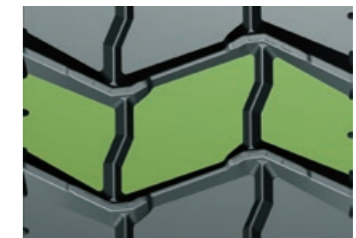
BO639

HEAVY LOAD, PUNCTURE RESISTANCE, IMPACT RESISTANCE, CHUNKING RESISTANCE

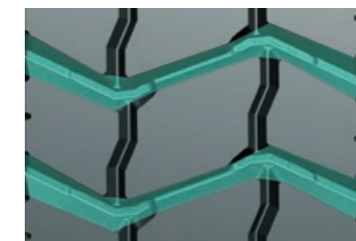
● Apply ● Available ● Disable



The big block design provides strong driving force on mining road.



The open groove and stone bouncing construction can prevent stones from damaging or breaking the groove.



The new cut resistance formula on mining road ensures the puncture and cut resistance performance.

Size	PR	Standard Rim (Inch)	Outside Diameter (mm)	Section Width (mm)	Max. Load				Max. Air Pressure				Load Index	Speed Rating
					Single		Double		Single		Double			
					KG	LBS	KG	LBS	KPa	PSI	KPa	PSI		
295/80R22.5	18	9.00	1044	298	3550	7830	3250	7160	900	130	900	130	152/149	F
11R22.5	16	8.25	1054	279	3000	6610	2725	6005	830	120	830	120	146/143	F
12R22.5	18	9.00	1085	300	3550	7830	3250	7160	930	135	930	135	152/149	L
12.00R20	18	8.50	1125	315	3750	7830	3450	7160	930	135	830	135	154/151	K
12.00R24	20	8.50	1226	315	4500	9920	4125	9090	900	130	900	130	160/157	K

MINE SITE SERIES

BO633

HEAVY LOAD, PUNCTURE RESISTANCE, IMPACT RESISTANCE, CHUNKING RESISTANCE



● Apply ● Available ● Disable



Industrial and mining usage. Strong overload resistance; Low accident rate, more secure; Cutting resistance.



Big block pattern, suitable for strong driving performance on harsh road; stone ejection design, reducing impact on groove bottom.



Open groove and stone ejection design, reducing impact on groove bottom.

New special formula, providing great puncture resistance tear resistance in poor road conditions.

Size	PR	Standard Rim (Inch)	Outside Diameter (mm)	Section Width (mm)	Max. Load				Max. Air Pressure				Load Index	Speed Rating
					Single		Double		Single		Double			
					KG	LBS	KG	LBS	KPa	PSI	KPa	PSI		
11.00R20	18	8.0	1096	293	3550	7830	3250	7160	930	135	930	135	152/149	F
12.00R20	20	8.5	1136	315	4000	8820	3650	8050	930	130	930	130	156/153	E

BO636

OVERLOAD, PUNCTURE RESISTANCE, IMPACT RESISTANCE, CHUNKING RESISTANCE



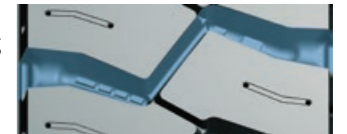
● Apply ● Available ● Disable



Industrial and mining usage. Strong overload resistance; Low accident rate, more secure; Cutting resistance.



Big block pattern, suitable for strong driving performance on harsh road.



Open groove and stone ejection design, reducing impact on groove bottom.

New special formula, providing great puncture resistance tear resistance in poor road conditions.

Size	PR	Standard Rim (Inch)	Outside Diameter (mm)	Section Width (mm)	Max. Load				Max. Air Pressure				Load Index	Speed Rating
					Single		Double		Single		Double			
					KG	LBS	KG	LBS	KPa	PSI	KPa	PSI		
11.00R20	18	8.0	1098	293	3550	7830	3250	7160	930	135	930	135	152/149	F

BO636(G)

OVERLOAD, PUNCTURE RESISTANCE, IMPACT RESISTANCE, CHUNKING RESISTANCE



● Apply ● Available ● Disable



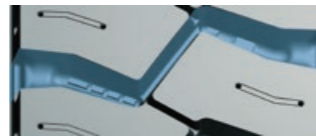
● Big block pattern, suitable for strong driving performance on harsh road.



● G series, enhanced bead with nylon and strong carcass design, 0 degree structure on shoulder, providing superior performance under heavy load conditions.



● Open groove and stone ejection design, reducing impact on groove bottom.



● New special formula for mining, providing great puncture resistance and tear resistance in poor road conditions.

Size	PR	Standard Rim (Inch)	Outside Diameter (mm)	Section Width (mm)	Max. Load				Max. Air Pressure				Load Index	Speed Rating
					Single		Double		Single		Double			
					KG	LBS	KG	LBS	KPa	PSI	KPa	PSI		
12.00R20	20	8.5	1136	315	4000	8820	3650	8050	900	130	900	130	156/153	E

SIZE	PATTERN
6.50R16LT-12PR	BL518 12PR
7.00R16LT-14PR	BL518 14PR
7.50R16LT-14PR	BM912 14PR
8.25R16LT-16PR	BM912 16PR
8.25R20-16PR	BM912 16PR
9.00R20-16PR	BM638R 16PR BM912 16PR
10.00R20-18PR	BM916 18PR BM638 18PR [®]
11.00R20-18PR	BM916 18PR BM628 18PR BO633 18PR BO636 18PR BM918 18PR

SIZE	PATTERN
12.00R20-18PR -20PR	
12.00R24-20PR	
11R22.5-16PR	
12R22.5-18PR	
13R22.5-18PR	
205/75R17.5 215/75R17.5 235/75R17.5 225/70R19.5 245/70R19.5 265/70R19.5 255/70R22.5	

SIZE	PATTERN
275/70R22.5-16PR	
275/80R22.5-18PR	
295/60R22.5-18PR	
295/80R22.5-18PR	
315/80R22.5-20PR	
385/55R22.5-20PR	
385/65R22.5-20PR	
425/65R22.5-20PR	

